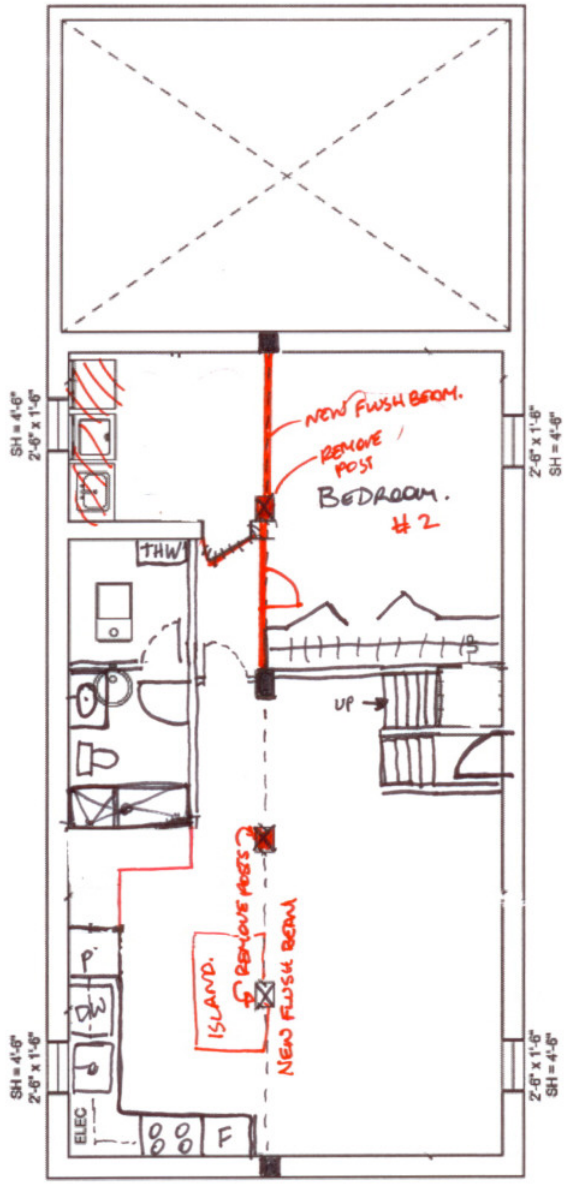


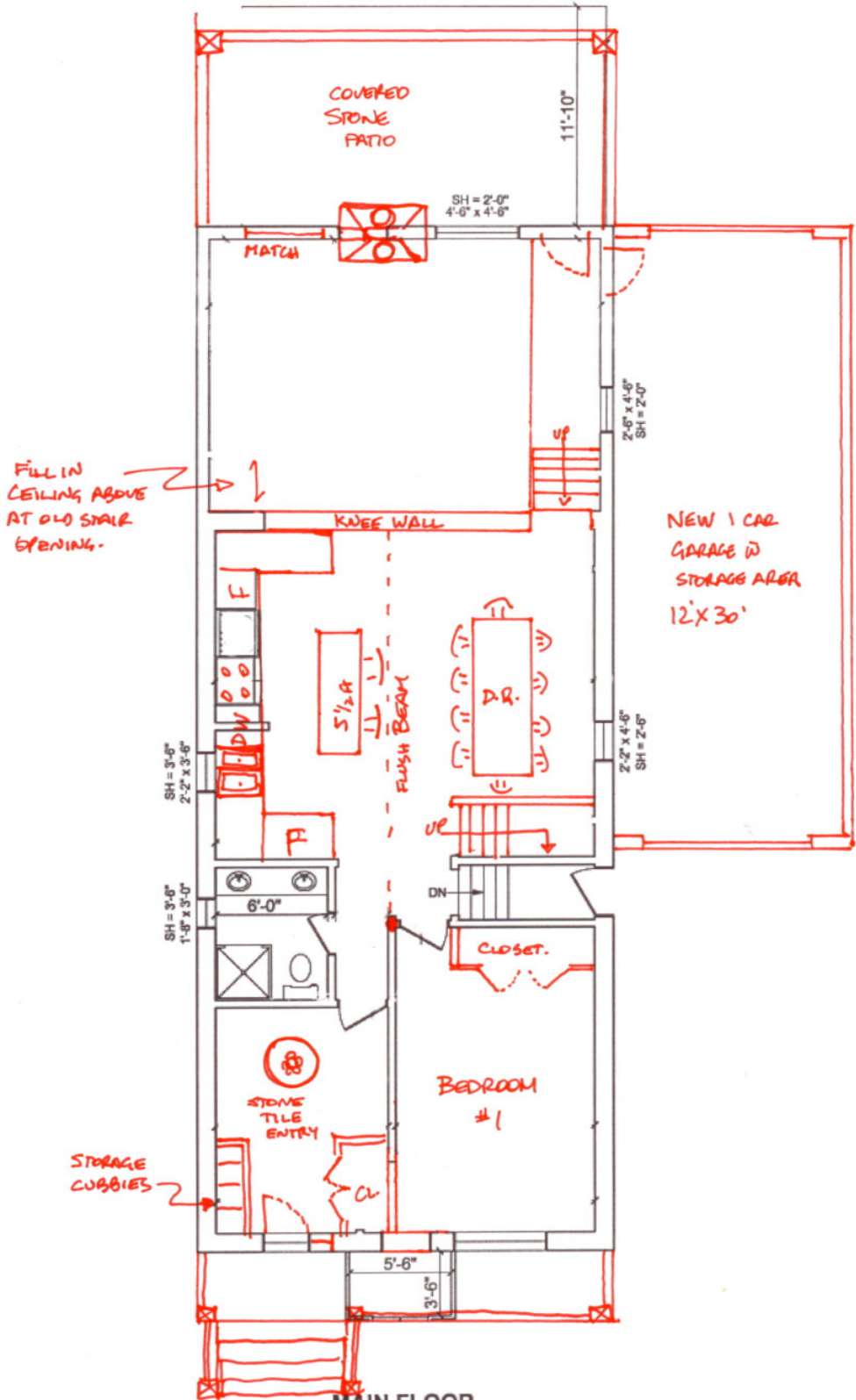
134 RANEE AVENUE



**BASEMENT**  
**897 SQUARE FEET**  
(CEILING HEIGHT = 6'-4")  
(SCALE : 1/8" = 1')

134 RANEE AVE.  
1ST DRAFT - SEPT 20/09.

134 RANEE AVENUE



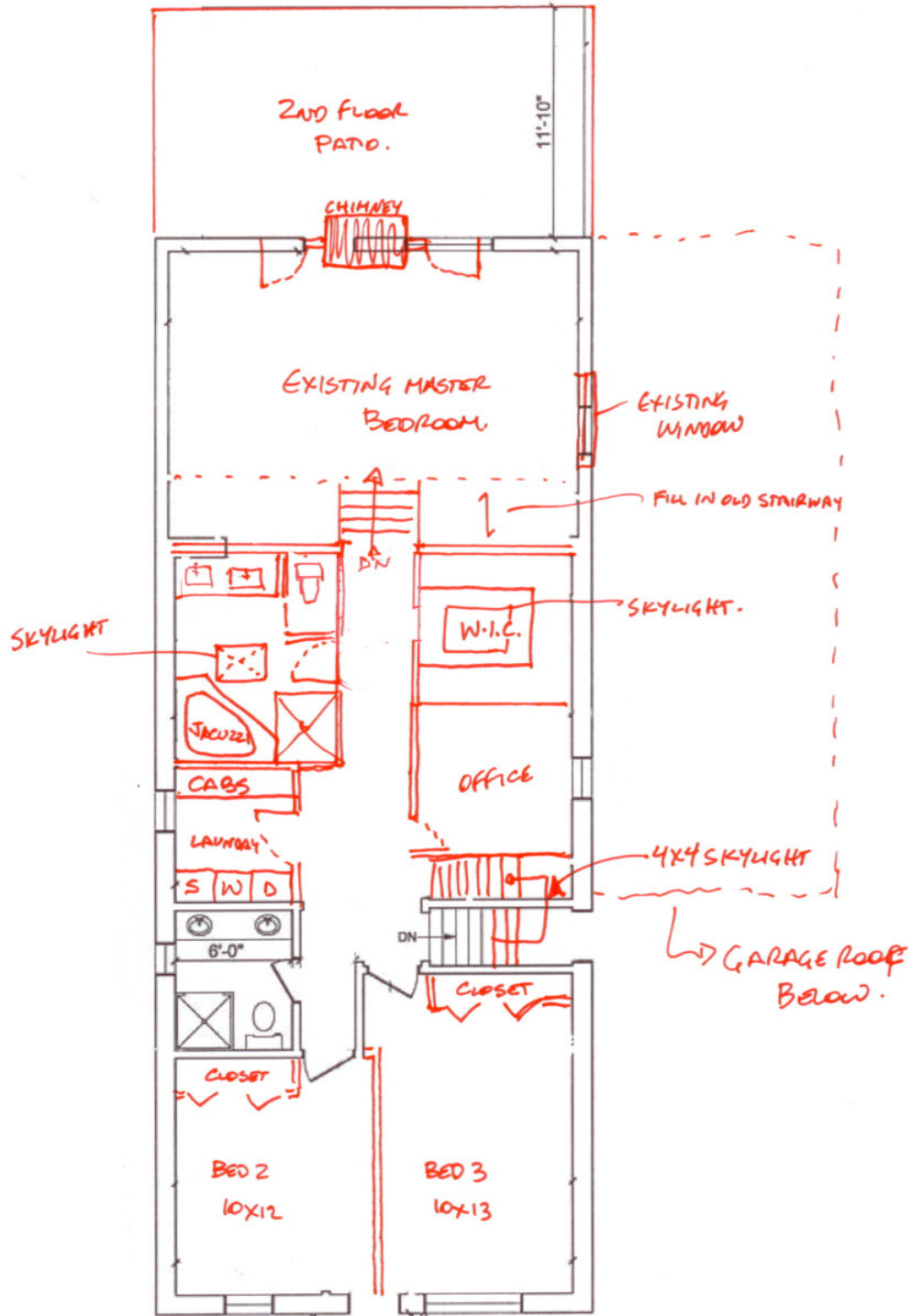
MAIN FLOOR  
1248 SQUARE FEET

(CEILING HEIGHT = 8'-0")  
(SCALE : 1/8" = 1')

1st DRAFT

SEPT 20/1991

134 RANEE AVENUE



2ND. FLOOR  
1248 SQUARE FEET

(CEILING HEIGHT = 8'-0")

(SCALE : 1/8" = 1')

1ST DRAFT  
SEPT 20/09